

Price Guide

As part of our commitment to our student tenants, we try to make our pricing as simple as possible. Please find the following pricing structure we are advising our Landlords for the next academic year. PLEASE USE THIS AS A GUIDE ONLY.

Pricing is based on the following criteria:-

1. Recently decorated with modern décor
2. Fully Furnished
3. All Bills Included (Gas, Electric, Water, TV License, Internet)
4. Maximum 20 minute walk to campus or a 10 minute walk to a bus stop for Uni. Of Warwick.
5. Flexible Contract Length (minimum 10 months).



Luxury Apartments

Apartments within the City Centre

2 Double Bedrooms, 2 Bathroom	£1,400pm
2 Double Bedrooms, 1 Bathroom	£1,300pm
1 Double 1 Single Bedroom, 2 Bathroom	£1,300pm
1 Double 1 Single Bedroom, 1 Bathroom	£1,200pm
One Bedroom Apartment	£950pm
Studio Apartment	£850pm

Apartments outside the City Centre

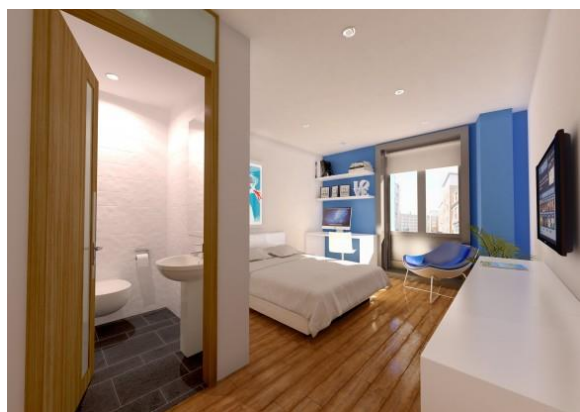
2 Double Bedrooms, 2 Bathroom	£1,200pm
2 Double Bedrooms, 1 Bathroom	£1,100pm
1 Double 1 Single Bedroom, 1 Bathroom	£1,000pm
One Bedroom Apartment	£750pm
Studio Apartment	£650pm

Furnishings

All rooms are advised to be furnished with a bed, mattress, mattress protector, desk with drawers and office chair, wardrobe with drawers, shelving, coat hooks and a bin.

En Suite Room within House Share

Large Double En Suite	£135pw	£585pcm
Standard Double En Suite	£125pw	£542pcm
Small Double En Suite	£120pw	£520pcm
Single En Suite	£110pw	£477pcm



Rooms within House Share

Large Double	£110pw	£477pcm
Double	£100pw	£434pcm
Small Double	£90pw	£390pcm
Single	£80pw	£347pcm

Definition of Room Sizes

- Large Double – Fitted with a double bed, soft seating and coffee table. Approx. 14sqm
- Standard Double - Fitted with a double bed. Approx. 12sqm
- Small Double – Fitted with a small double bed. Approx. 9sqm
- Single – Fitted with a single bed. Approx. 6sqm

Meet the Team



Heenay Joshi
LettingsPartner
024 7650 0005
07864 942 768
heenay@newman.uk.com

With over 20 years of industry experience and having personally experienced difficulties as a student, I am now in a position to be able to make a positive contribution to the Student Let market to benefit both Students and Landlords.



Geraldine Evans
Student Liaison
024 7650 0057
07494 968 712
geraldine@newman.uk.com

Being an Associate Member of the Guild of Property Professionals, my background is in NHS Mental Health and Housing Strategy. I now specialise in single, portfolio landlords and student lettings.